

Center Distance $a_0 = 80 \text{ mm}$

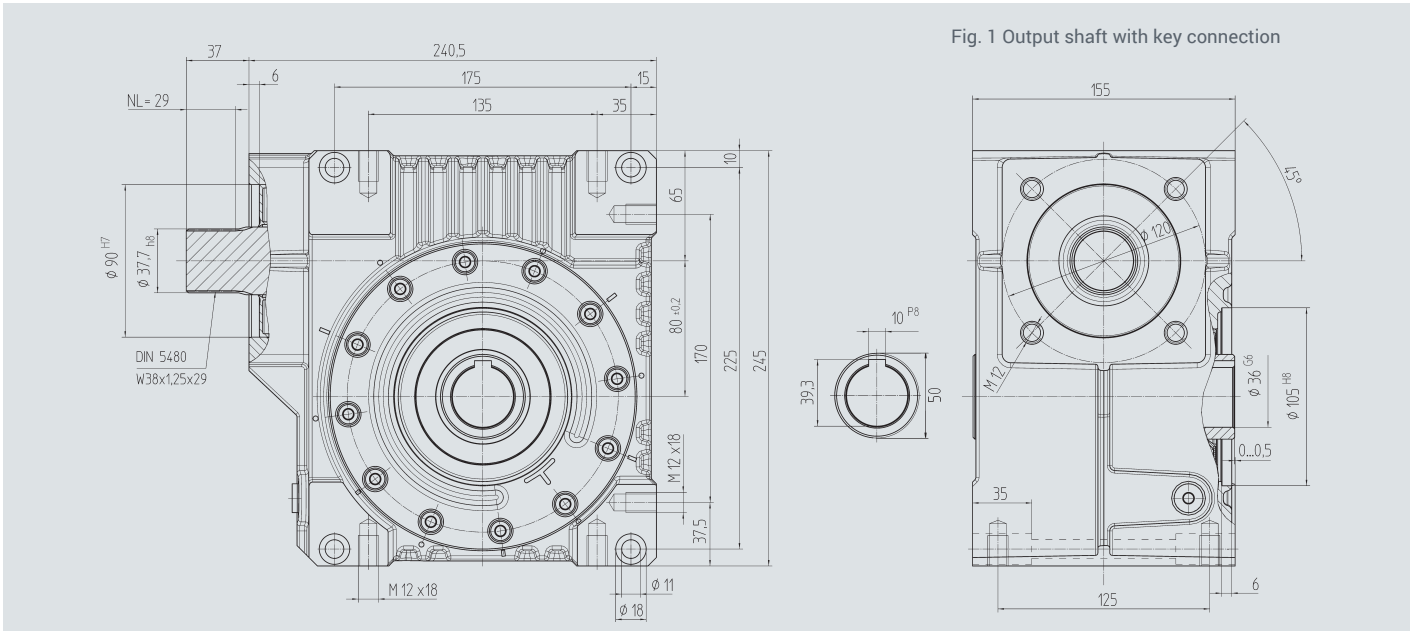


Fig. 1 Output shaft with key connection

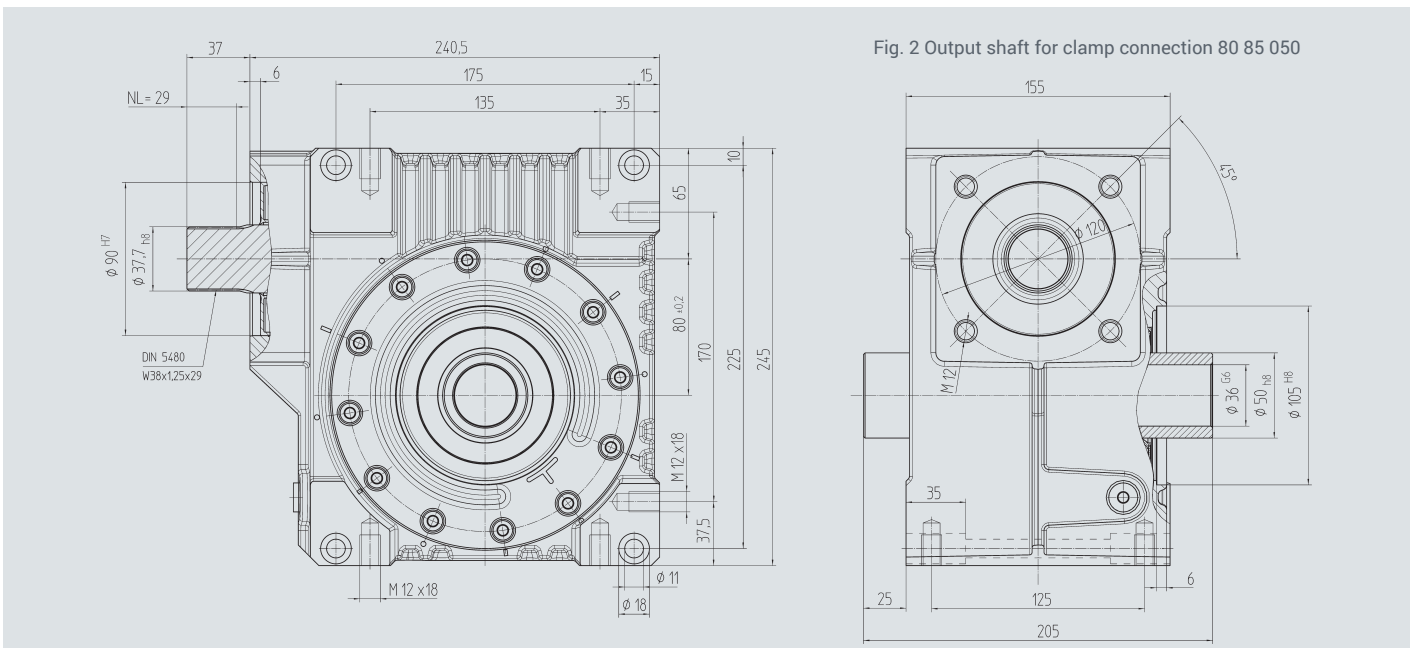
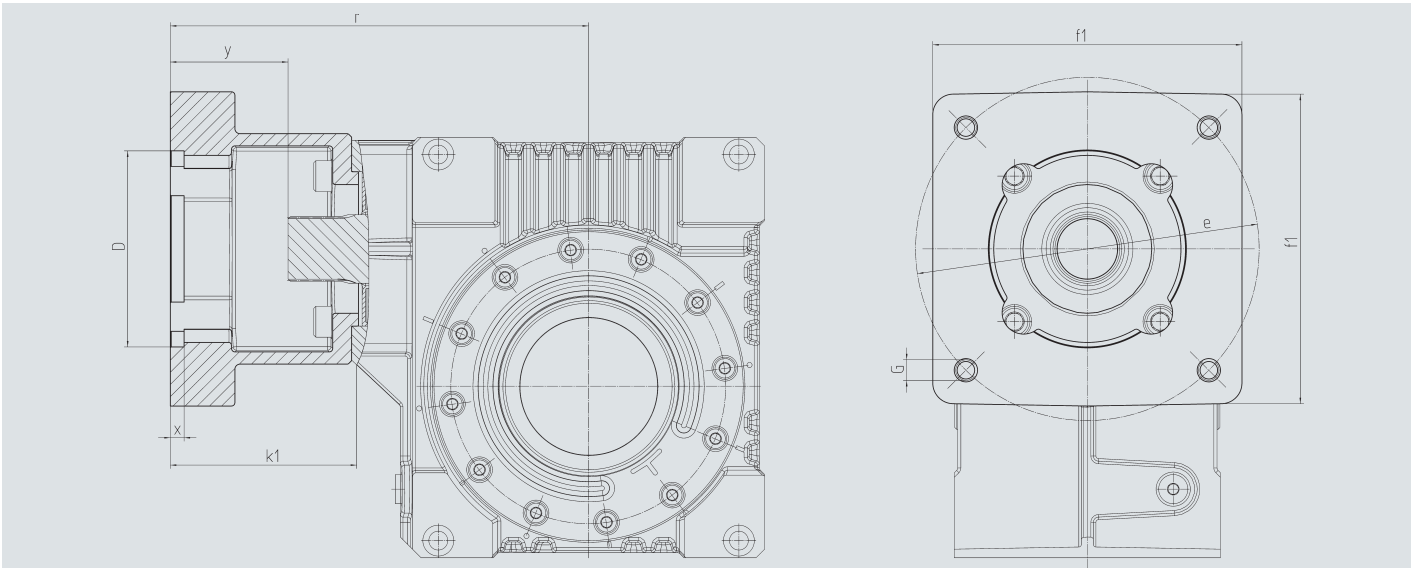


Fig. 2 Output shaft for clamp connection 80 85 050

Order Code Fig. 1	Fig. 2	Ratio i	J_{red} kg	$J_{\text{red}} 10^{-4} \text{ kg m}^2$
58 05 005	58 15 005	4.75	22.0	9.6180
58 05 007	58 15 007	6.75	22.0	6.0910
58 05 009	58 15 009	9.25	22.0	4.7650
58 05 015	58 15 015	14.50	22.0	5.3080
58 05 020	58 15 020	19.50	22.0	3.9350
58 05 029	58 15 029	29.00	22.0	4.0500
58 05 039	58 15 039	39.00	22.0	4.1800
58 05 052	58 15 052	52.00	22.0	3.7140

With food grade oil: Order Code 58 05 1xx / 58 15 1xx
 In ATEX with food grade oil: Order Code 58 05 2xx / 58 15 2xx

Motor Flange



Center Distance $a_0 = 80 \text{ mm}$

Order Code	D ⁶⁷	k ₁	r	x	y	f ₁	e	G	kg
65 59 501	110.0	92.0	230.0	8.0	55.0	140	165	M10	2.00
65 59 502	130.0	92.0	230.0	8.0	55.0	140	165	M10	1.90
65 59 503	180.0	122.0	260.0	8.0	85.0	192	215	M12	3.40
65 59 504	180.0	127.0	265.0	8.0	90.0	192	215	M12	3.80
65 59 505	180.0	112.0	250.0	10.0	75.0	192	215	M12	2.70
65 59 506	130.0	112.0	250.0	10.0	75.0	192	215	M12	3.00
65 59 507	130.0	112.0	250.0	10.0	75.0	140	165	M10	2.50
65 59 508	110.0	90.0	228.0	8.0	53.0	140	145	M8	2.00
65 59 509	110.0	108.5	246.5	8.0	71.5	140	145	M8	2.50
65 59 510	114.3	129.5	267.5	8.0	92.5	180	200	M12	5.00
65 59 511	114.3	163.5	301.5	8.0	126.5	180	200	M12	4.20
65 59 512	114.3	105.5	243.5	8.0	68.5	180	200	M12	3.50
65 59 513	110.0	113.5	251.5	8.0	76.5	140	145	M8	2.70

An order should contain gearbox 58 05 0xx / 58 15 0xx and flange 65 59 5xx