

FEATURES

Premium Components

Twin viton seals with stainless steel 316L shield.



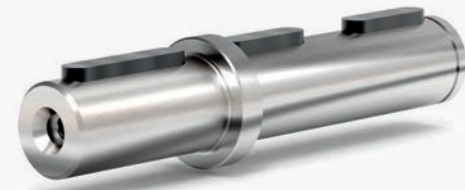
Removable hollow shaft with key for safe torque transmissions.



Fully modular IEC flanges and compact NEMA C motor flanges.



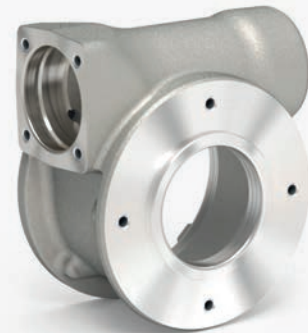
Output shaft is produced in AISI 316L. Special cover assures full protection of oil seals.



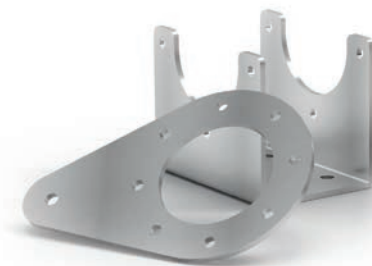
Input coupling



Housing with special smooth surfaces.



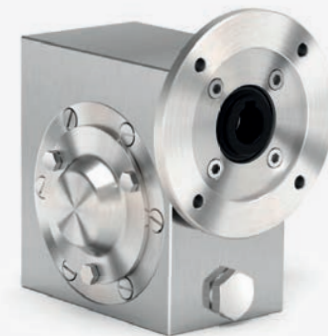
All stainless steel 316L hardware.



Hardened and ground gears.



Closed protection cap in AISI 316L with o-ring.



Electric Motors

4 Poles
Voltage: Δ/Y 230/400V - 50Hz
Protection: I.C.I.F - IP69k - IC410
Efficiency: IE3 (IEC60034-30, IEC60034-2-1, Pn ≥ 0,75kW)
Duty Cycle: S1
Other Features: INVERTER DUTY, HYGIENIC, PTO PROTECTION INCLUDED

APM Series
Aluminum Premium Electric Motors



| Motor | kW | IE3 | rpm (min-1) | Nm | A (400V) | COS (φ) | Kg |
|-------|------|------------------------|-------------|------|----------|---------|------|
| 63A | 0.12 | | 1440 | 0.80 | 0.44 | 0.57 | 6.9 |
| 63B | 0.18 | | 1440 | 1.19 | 0.58 | 0.62 | 8.0 |
| 71A | 0.25 | | 1440 | 1.66 | 0.72 | 0.64 | 9.4 |
| 71B | 0.37 | | 1440 | 2.45 | 1.10 | 0.64 | 11.1 |
| 80A | 0.55 | | 1460 | 3.60 | 1.50 | 0.67 | 15.3 |
| 80B | 0.75 | IE3 PREMIUM EFFICIENCY | 1460 | 4.91 | 2.10 | 0.67 | 18.0 |
| 90S | 1.1 | IE3 PREMIUM EFFICIENCY | 1460 | 7.20 | 2.90 | 0.70 | 22.7 |
| 90L | 1.5 | IE3 PREMIUM EFFICIENCY | 1460 | 9.81 | 4.00 | 0.70 | 28.4 |

SPM Series
Stainless Steel Premium Electric Motors



| Motor | kW | IE3 | rpm (min-1) | Nm | A (400V) | COS (φ) | Kg |
|-------|------|------------------------|-------------|------|----------|---------|------|
| 63A | 0.12 | | 1440 | 0.80 | 0.44 | 0.57 | 6.9 |
| 63B | 0.18 | | 1440 | 1.19 | 0.58 | 0.62 | 8.0 |
| 71A | 0.25 | | 1440 | 1.66 | 0.72 | 0.64 | 9.4 |
| 71B | 0.37 | | 1440 | 2.45 | 1.10 | 0.64 | 11.1 |
| 80A | 0.55 | | 1460 | 3.60 | 1.50 | 0.67 | 15.3 |
| 80B | 0.75 | IE3 PREMIUM EFFICIENCY | 1460 | 4.91 | 2.10 | 0.67 | 18.0 |
| 90S | 1.1 | IE3 PREMIUM EFFICIENCY | 1460 | 7.20 | 2.90 | 0.70 | 22.7 |
| 90L | 1.5 | IE3 PREMIUM EFFICIENCY | 1460 | 9.81 | 4.00 | 0.70 | 28.4 |
| 100LA | 2.2 | IE3 PREMIUM EFFICIENCY | 1440 | 14.6 | 4.80 | 0.79 | 34.0 |

ATLANTA Drive Systems Inc.
1775 Route 34, Unit D-10
Farmingdale, NJ 07727
Phone: (800) 505-1715
Email: info@atlantadrives.com
Website: www.atlantadrives.com

CLEAN-GEARTECH



AN INNOVATIVE PRODUCT RANGE



HYGIENIC DESIGN

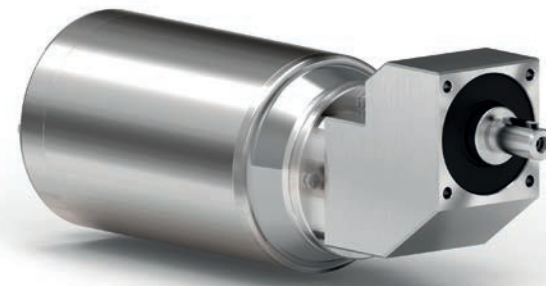
I Series

Full Stainless Steel Gearboxes

VFI Series
Stainless Steel Worm Gearboxes



RCI Series
Stainless Steel Ratio Multiplier



BVI Series
Stainless Steel Helical Bevel Gearboxes



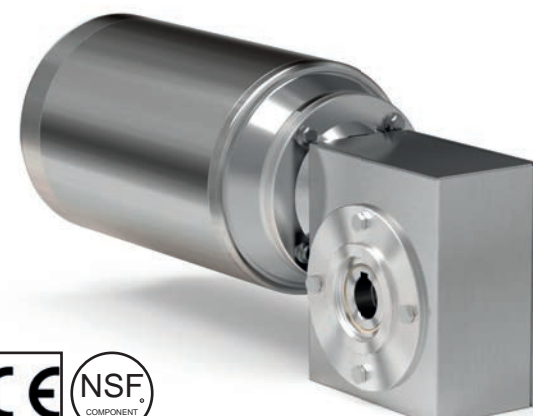
Ratios: 5 to 102

| Type | Torque | Input Power |
|------|--------|-----------------|
| I30 | 21 Nm | 0.09 to 0.18 kW |
| I45 | 41 Nm | 0.12 to 0.37 kW |
| I50 | 72 Nm | 0.12 to 0.75 kW |
| I63 | 147 Nm | 0.37 to 1.8 kW |
| I85 | 347 Nm | 0.55 to 4.0 kW |
| I11 | 651 Nm | 1.1 to 4.0 kW |

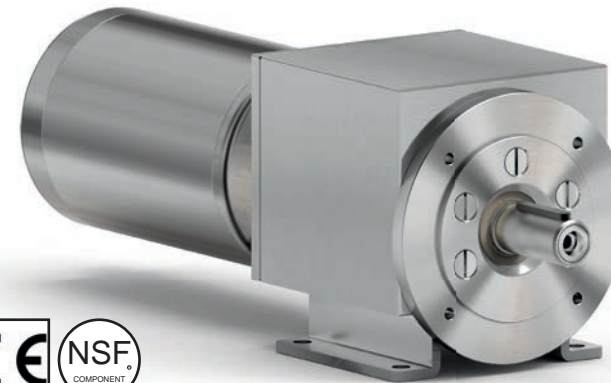
L Series

Stainless Steel Shielded Gearboxes

VFL series
Stainless Steel Shielded Worm Gearboxes



RCL Series
Stainless Steel Shielded Coaxial Gearboxes



BVL Series
Stainless Steel Shielded Helical Bevel Gearboxes



Ratios: 7 to 102

| Type | Torque | Input Power |
|------|--------|-----------------|
| LD45 | 41 Nm | 0.12 to 0.37 kW |
| LD50 | 72 Nm | 0.12 to 0.75 kW |
| LD63 | 147 Nm | 0.37 to 1.8 kW |
| LD85 | 347 Nm | 0.55 to 4.0 kW |

Ratios: 1.3 to 61.89

| Type | Torque | Input Power |
|------|--------|----------------|
| 411L | 38 Nm | 0.37 to 1.5 kW |
| 511L | 110 Nm | 1.1 to 4.0 kW |

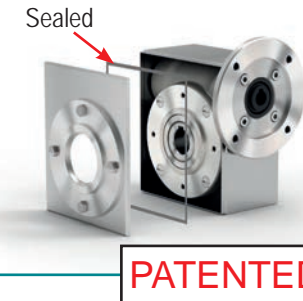
Ratio Multiplier

Coaxial gearboxes

| | | |
|------|--------|----------------|
| 402L | 160 Nm | 0.37 to 1.5 kW |
| 602L | 520 Nm | 1.1 to 7.5 kW |

Ratios: 4.83 to 77.55

| Type | Torque | Input Power |
|------|--------|-----------------|
| X22L | 50 Nm | 0.09 to 0.37 kW |
| X32L | 90 Nm | 0.18 to 1.5 kW |
| X42L | 150 Nm | 0.25 to 1.5 kW |
| X52L | 250 Nm | 0.37 to 3.0 kW |
| X62L | 410 Nm | 0.75 to 4.0 kW |



Z Series

Aluminum Gearboxes with NTT Treatment

VFZ Series
Aluminum Worm Gearboxes



RCZ Series
Aluminum Ratio Multiplier



Ratios: 5 to 102

| Type | Torque | Input Power |
|------|--------|-----------------|
| Z30 | 21 Nm | 0.09 to 0.18 kW |
| Z45 | 41 Nm | 0.12 to 0.37 kW |
| Z50 | 72 Nm | 0.12 to 0.75 kW |
| Z63 | 147 Nm | 0.37 to 1.8 kW |
| Z85 | 347 Nm | 0.55 to 4.0 kW |

Ratios: 2.05 to 9.83

| Type | Torque | Input Power |
|------|--------|-----------------|
| 211Z | 20 Nm | 0.25 to 0.37 kW |

NTT™ is a special surface treatment which results in modified external properties of the complete unit.